



# Anshe Emet Synagogue, Chicago



Anshe Emet Synagogue  
3751 N. Broadway Ave.  
Chicago, IL  
AnsheEmet.org

In 2014 Sound Planning designed and installed a new sound system in their main sanctuary. Not only is the sanctuary the main space for worship, but it is also used for concerts, lectures and other musical performances.

This system will not only provide clear and intelligible speech for the rabbi's sermons, but will also provide concert-quality sound for Hazzan, Alberto Mizrahi's powerful voice and his musical guests.



PROFESSIONAL SOUND AND  
AUDIOVISUAL INTEGRATION

Sound Planning Associates, Inc.  
www.soundplanning.com  
923 W. Liberty Drive  
Wheaton, IL 60187

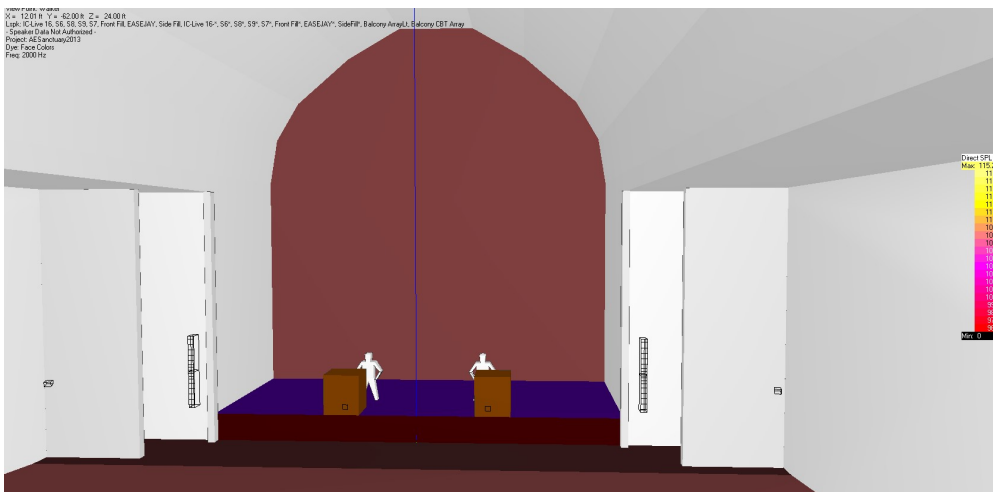
Phone: 630-653-6700



# Anshe Emet Synagogue, Chicago



To aid in design of the loudspeaker system, Sound Planning utilized EASE acoustic modeling software. This design utilized Renkus Heinz IC-Live steerable line-arrays to cover the majority of the main floor seating. In addition to the main loudspeakers additional compact CFX41 loudspeakers were installed as front fills, side fills and in the balcony. The resulting sound is consistent and musical throughout the entire sanctuary.



PROFESSIONAL SOUND AND AUDIOVISUAL INTEGRATION

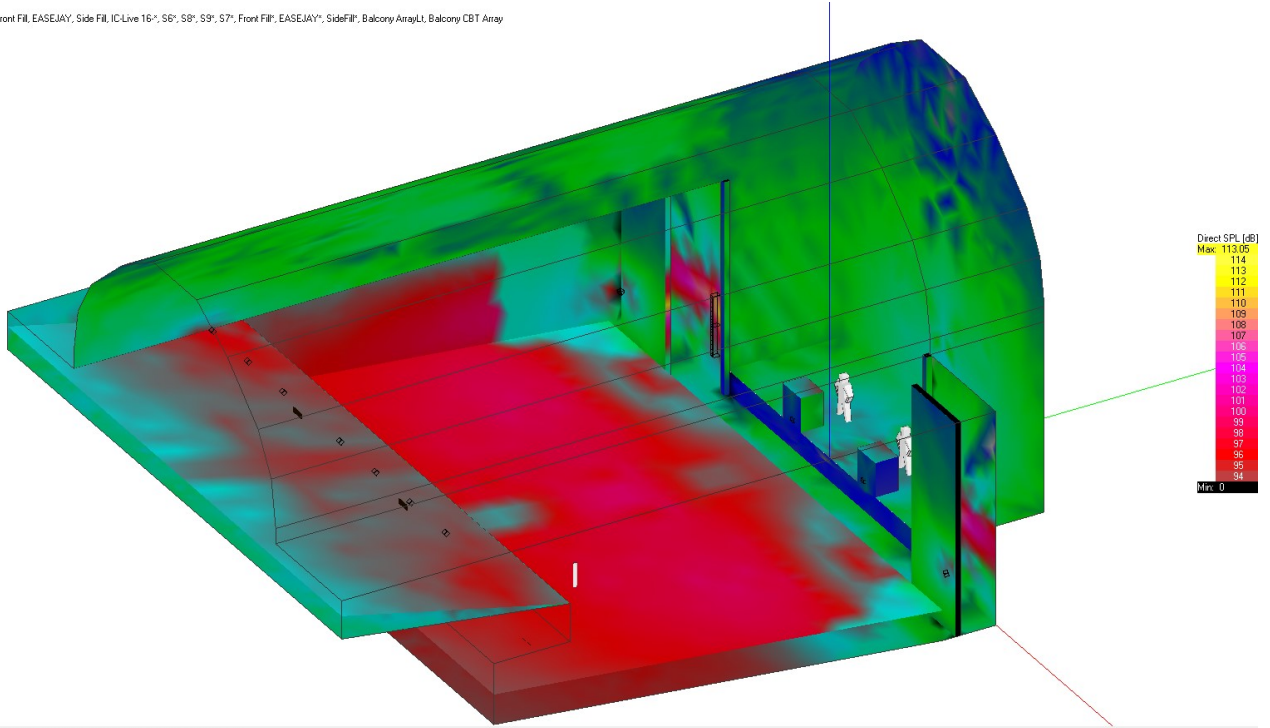
Sound Planning Associates, Inc.  
www.soundplanning.com  
923 W. Liberty Drive  
Wheaton, IL 60187

Phone: 630-653-6700



# Anshe Emet Synagogue, Chicago

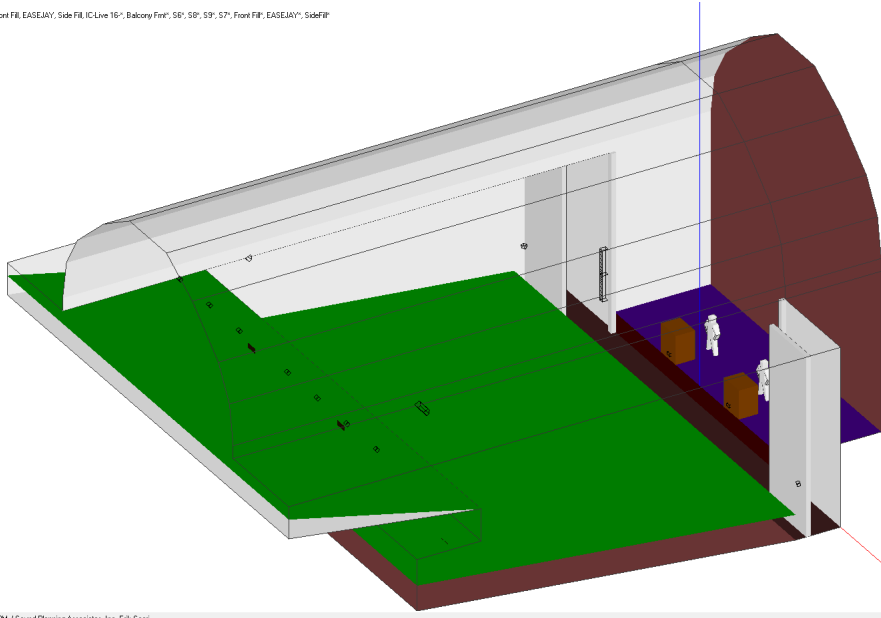
Ver: 30° Hor: 120°  
Lspk: IC Live 16, S6, S8, S9, S7, Front Fill, EASEJAY, Side Fill, IC Live 16°, S6°, S8°, S9°, S7°, Front Fill, EASEJAY, Side Fill, Balcony Array Lt, Balcony CBT Array  
- Speaker Data Not Authorized -  
Project: aE\_Synagogue2013  
Map: Direct SPL (Z)  
Freq: 1000 Hz  
(1/3 Octave Sum)  
Energy: 2 \* Epot  
(1/3 Octave)  
Shadow Cast: Yes  
Resolution: 3.28 ft



(c) EASE 4.3 / Anshe Emet / 5/1/2014 9:08:19 AM / Sound Planning Associates, Inc. Erik Saari

To aid in design of the loudspeaker system, Sound Planning utilized EASE acoustic modeling software. This design utilized Renkus Heinz IC-Live steerable line-arrays to cover the majority of the main floor seating. In addition to the main loudspeakers additional compact CFX41 loudspeakers were installed as front fills, side fills and in the balcony. The resulting sound is consistent and musical throughout the entire sanctuary.

Ver: 120°  
Lspk: Balcony Fmk, S6, S8, S9, S7, Front Fill, EASEJAY, Side Fill, IC Live 16°, Balcony Fmk, S6°, S8°, S9°, S7°, Front Fill, EASEJAY, Side Fill  
- Speaker Data Not Authorized -  
Project: aE\_Synagogue2013  
Map: Direct SPL (Z)  
Freq: 1000 Hz  
(1/3 Octave Sum)  
Energy: 2 \* Epot  
(1/3 Octave)  
Shadow Cast: Yes  
Resolution: 3.28 ft



/ Anshe Emet / 4/5/2013 3:11:13 PM / Sound Planning Associates, Inc. Erik Saari



PROFESSIONAL SOUND AND AUDIOVISUAL INTEGRATION

Sound Planning Associates, Inc.  
www.soundplanning.com  
923 W. Liberty Drive  
Wheaton, IL 60187

Phone: 630-653-6700



# Anshe Emet Synagogue, Chicago



Operation of the system is from a Yamaha QL1 digital mixing console configured for 32– channels. During special events an mixing engineer is present to operate the mixer. During most weekly uses, the system is automatically mixed via the internal DanDugan automix system within the Yamaha mixer.



PROFESSIONAL SOUND AND AUDIOVISUAL INTEGRATION

Sound Planning Associates, Inc.  
www.soundplanning.com  
923 W. Liberty Drive  
Wheaton, IL 60187

Phone: 630-653-6700